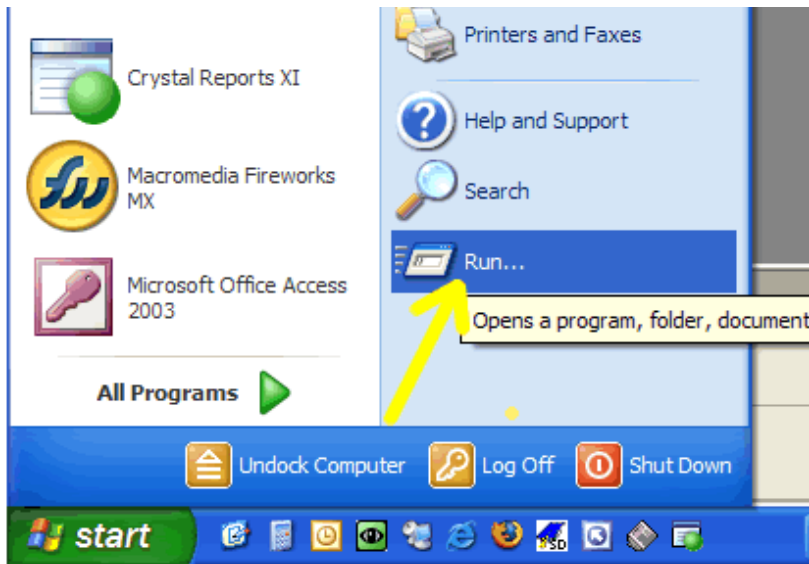


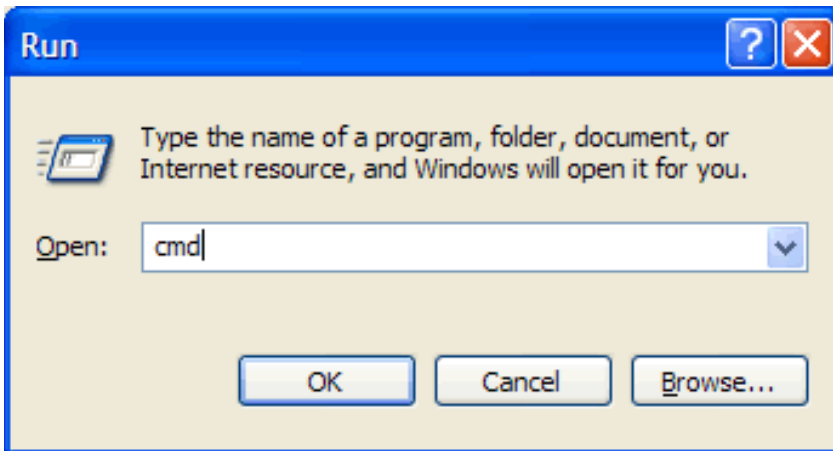
How to get your MAC address from your Windows PC

These instructions work with Windows XP, Windows 2000 and Windows Vista. Print these instructions and give to user if needed.

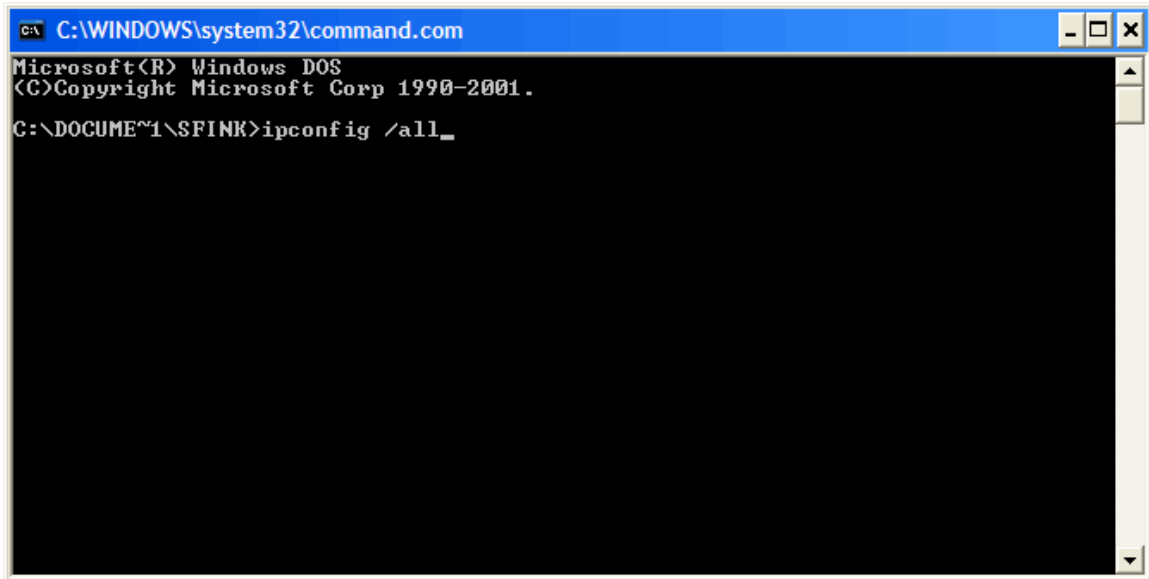
1. Go to “Start/Run”



2. Type “cmd” to bring up the Windows command line interface

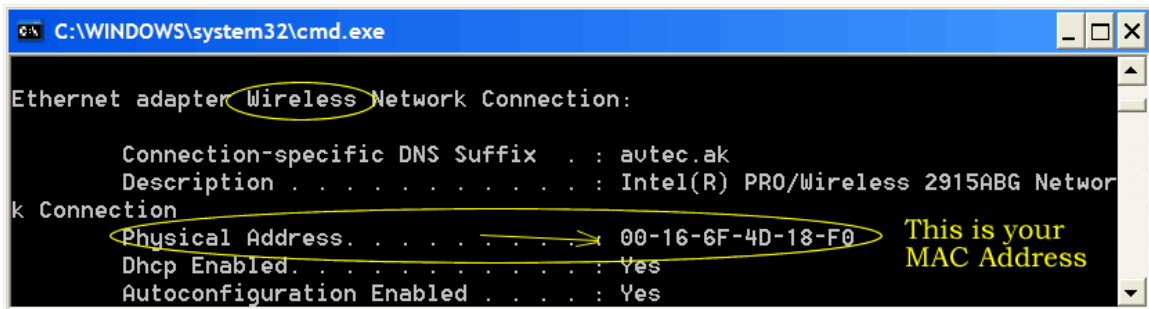


3. Type "ipconfig /all"



```
C:\WINDOWS\system32\command.com
Microsoft(R) Windows DOS
(C)Copyright Microsoft Corp 1990-2001.
C:\DOCUME~1\SFINK>ipconfig /all_
```

4. Find your MAC Address for your Wireless Network Adapter/Physical Address. Do not confuse with the Local Area Connection.



```
C:\WINDOWS\system32\cmd.exe
Ethernet adapter Wireless Network Connection:
    Connection-specific DNS Suffix . . : autec.ak
    Description . . . . . : Intel(R) PRO/Wireless 2915ABG Networ
k Connection
    Physical Address. . . . . : 00-16-6F-4D-18-F0 This is your
    Dhcp Enabled. . . . . : Yes MAC Address
    Autoconfiguration Enabled . . . . : Yes
```

5. Carefully write down your MAC address to be submitted to AVTEC IT